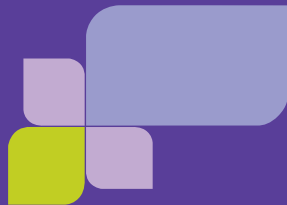


Abbott Fund invests in creative ideas that promote science and medical innovation, expand access to health care and strengthen communities worldwide. In partnership with others, we strive to make a lasting impact on people's lives and encourage others to action.



## Submitting an Application

To submit an application, go to our Web site, [abbottfund.org](http://abbottfund.org).

### Step 1

Review Abbott Fund's funding guidelines information to determine whether your organization or program is eligible under our criteria.

### Step 2

Take the eligibility test.

You must complete the eligibility test to ensure that the organization or program falls within our funding criteria. If you pass the test, you will be allowed access to our standard on-line application. Passing the eligibility test does not guarantee a grant, only that the completed application will be considered.

### Step 3

If prompted to do so, complete the standard application and submit as directed. You may only access the standard application form after completing the eligibility test and only if the test determines that your organization or program is eligible for a grant. *Note: Only our standard on-line application will be accepted by Abbott Fund. Paper applications or other types of material will not be considered.*



Funding Guidelines



## Funding Guidelines

### Allowable entities include:

- 501(c)(3) public charities or equivalent unless otherwise noted in this section
- Governmental entities (public universities, public schools, etc.)
- Organizations not recognized as a 501(c)(3) public charity or as a government entity (i.e., foreign organizations and/or private foundations) may be considered if invited to apply by Abbott Fund
- Requests for funding to the United Way and its agencies will be considered on an exception basis only; Abbott Fund provides a matching contribution based on an annual employee giving campaign

### Abbott Fund will not grant to the following entities:

- Individuals
- For-profit entities
- Purely social organizations
- Political parties or candidates
- Sectarian religious organizations
- Trade or business associations

### Abbott Fund will not provide grants for the following:

- Advertising journals, booklets, etc.
- Any purposes which would directly benefit Abbott Corporation
- Capital campaigns (unless initiated by the Fund)
- Congresses, symposiums, and meetings
- Individual scholarships
- Lobbying
- Medical research which may support Abbott products
- Memorials
- Political candidates, campaigns and activities
- Special fundraising events and ticket purchases (i.e., dinners, walks, runs, rides, etc.)
- Sporting events (tickets and sponsorships)
- The benefit of any particular individual, including individual travel and/or study
- Travel expenses
- Trips, tours or cultural exchange programs
- Volunteer requests

Grant requests should not exceed \$100,000. Grants in excess of \$100,000 will be considered only by invitation from Abbott Fund.

All organizations applying for grants from Abbott Fund must demonstrate solid financial and program management and be willing to share financial and program audit reports upon request.

## Major Program Funding Areas

### Support is given to programs and projects that align with Abbott Fund's mission and grant criteria in four strategic areas:

- Global AIDS Care
- Access to Health Care
- Science and Medical Innovation
- Community Vitality

### We encourage programs that are able to do the following:

- Demonstrate measurable results or health outcomes
- Create potential for program replication by other funders
- Utilize innovative and sustainable approaches

## Program Guidelines

### Global AIDS Care Grants

*Special Note: Grants submitted to the Abbott Global AIDS Care Program are by invitation only.*

#### Program requirements:

- Minimum grant size required: \$10,000
- Program should offer significant potential as a sustainable model, including incorporation of local decision-making and, eventually, local control
- Program should include strong monitoring, evaluation and results reporting
- Organization has track record in HIV/AIDS programs

### Access to Health Care and Science and Medical Innovation Grants

#### Program requirements:

- Minimum grant size required for both segments: \$20,000

### Access to Health Care

#### Preference will be given to programs that:

- Seek to apply scientific expertise to improve health care in the developing world or that involve rare diseases
- Contain a significant training component
- Focus on minimizing health disparities

## Science and Medical Innovation

### Preference will be given to programs that:

- Are located in an area where Abbott has employees and/or facilities
- Emphasize oncology, nutrition, maternal/child health, HIV/AIDS, cardiovascular health, diabetes and mental health

## Community Vitality Grants

### Program requirements:

- Minimum grant size required: \$10,000
- Program should relate to critical community needs and provide supporting statistics with sources as requested
- Program should provide support directly to Abbott site communities:

|                          |                         |
|--------------------------|-------------------------|
| Abbott Park, IL          | Jayuya, Puerto Rico     |
| Abingdon, England        | Kanata, Canada          |
| Alameda, CA              | Katsuyama, Japan        |
| Altavista, VA            | Ludwigshafen, Germany   |
| Barceloneta, Puerto Rico | North Chicago, IL       |
| Brockville, Canada       | Queenborough, England   |
| Campoverde, Italy        | Redwood City, CA        |
| Casa Grande, AZ          | Rio de Janeiro, Brazil  |
| Clonmel, Ireland         | Santa Clara, CA         |
| Columbus, OH             | Sligo, Ireland          |
| Cootehill, Ireland       | Sturgis, MI             |
| Delkenheim, Germany      | Temecula, CA            |
| Des Plaines, IL          | Worcester, MA           |
| Fairfield, CA            | Zwolle, the Netherlands |
| Irving, TX               |                         |

## Eligibility Test

Abbott Fund funds only those organizations and programs that meet our established grant criteria and are willing to share financial and program audit reports upon request. In order to accurately access an application, applicants are required to pass an eligibility test. This test determines if there is a match between an applicant's funding needs and Abbott Fund grant criteria.

If your organization passes the eligibility test, you will have access to our standard on-line application. All applications are reviewed by Abbott Fund and applicants are notified of funding decisions. Due to the high volume of requests received, not every request that matches Abbott Fund criteria will receive funding.